

Uniform Bar Examination

Exam Dates

Tuesday and Wednesday

July 28 and 29,
2020

February 23 and
24, 2021

Logistical Matters

Preliminary Requirements

Register	January 15 August 15
File exam application	April 1 November 1
Final Law School Cert.	30 days prior
Substance Abuse Instr. Certificate	30 days prior
Receive CF approval	3 weeks prior

Exam Instructions

- Sent to all **approved** applicants
- Mailed out about two weeks before exam
- Provide exam information and “rules” of the exam
- Assign your exam ID number

The instructions are very important,
so be sure to read them!

Columbus Convention Center

400 N. High Street



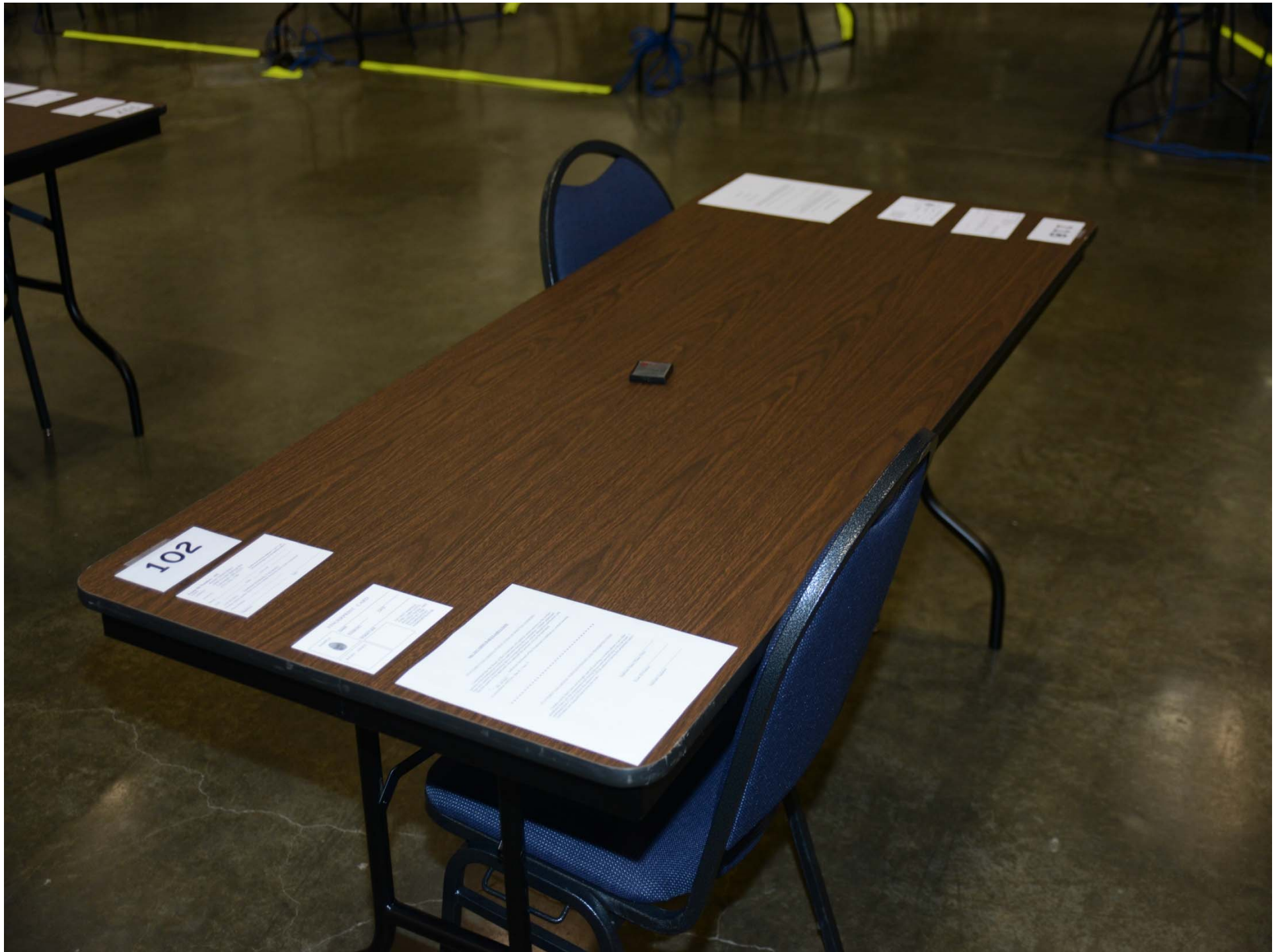
Roberts Centre 123 Gano Rd, Wilmington



Daily Schedule

7:45 AM	Doors open
9:00 AM	Instructions begin
9:15 AM	Testing Begins
12:30 PM	Lunch break/dismissal
1:30 PM	Testing resumes
4:50 PM	Testing concludes
5:00 PM	Dismissal









**Smoking is
prohibited.**



And NO cell phones
allowed!



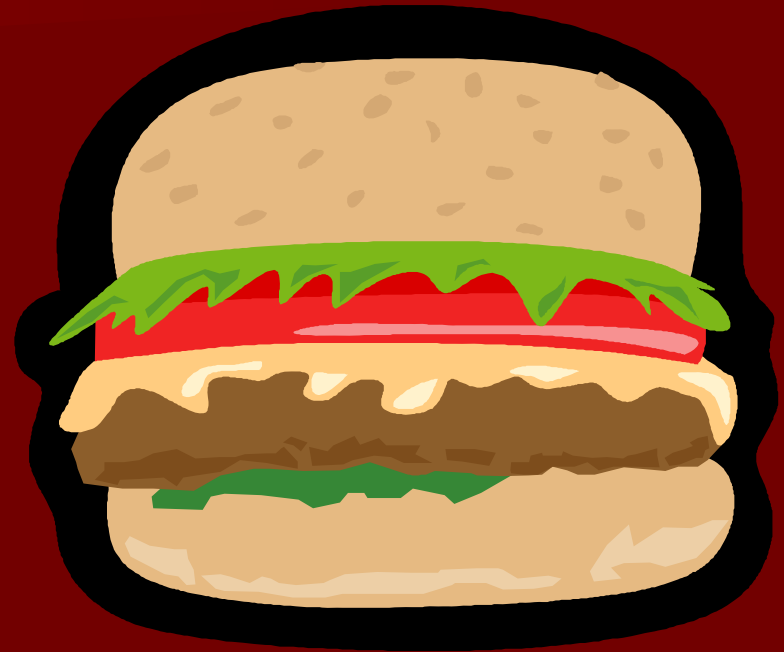
Food and Drink

- Water fountains may be used during the exam
- Applicants may also bring clear, bottled water to their tables
- No other food or drink is permitted in the hall during testing

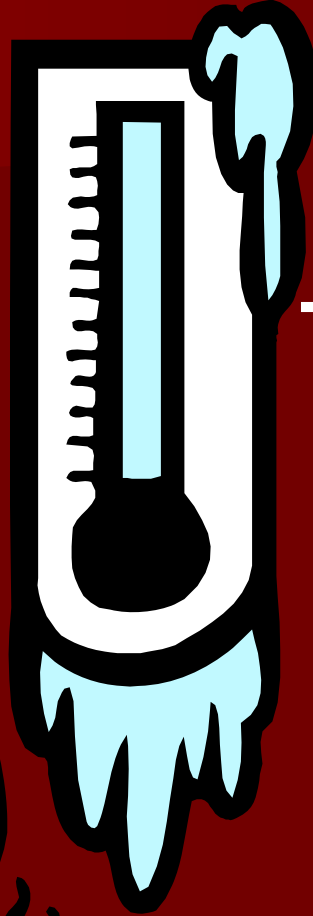


Lunch Break

- Packed lunch
- Concessions
- Outside restaurants



Dress in layers.



The exam hall
might be
chillier than
you'd prefer!



Or, it might
be **warmer**
than you'd
like!

Administrative Matters – Day 1

- Oral instructions
- Information cards
- Photo IDs
- Fingerprints
- Publication release



UBE Test Day Schedules

■ Tuesday Sessions

- MPT (2 items, 3 hours)
- MEE (6 essays, 3 hours)

■ Wednesday Sessions

- MBE AM (100 questions, 3 hours)
- MBE PM (100 questions, 3 hours)

UBE Components



Multistate Essay Exam

MEE – 6 Questions

- Contracts
- Constitutional law
- Criminal law and procedure
- Evidence
- Real property
- Trusts & Estates
- Torts
- Civil procedure
- Business associations
- Conflict of Laws
- Family Law
- Article 9 - Secured Transactions

What the MEE Tests

- Identify legal issues raised by a hypothetical factual situation.
- Ability to reason and analyze. Ability to provide reasons for your conclusions.
- Ability to communicate effectively in writing.
- Ability to read each fact situation carefully and use only the facts given in the question.
- Ability to identify which area of law is being tested. Some questions may cover more than one area of law.

NCBE Free Study Aids

MEE Questions and Analyses from older administrations are available on NCBE's website.

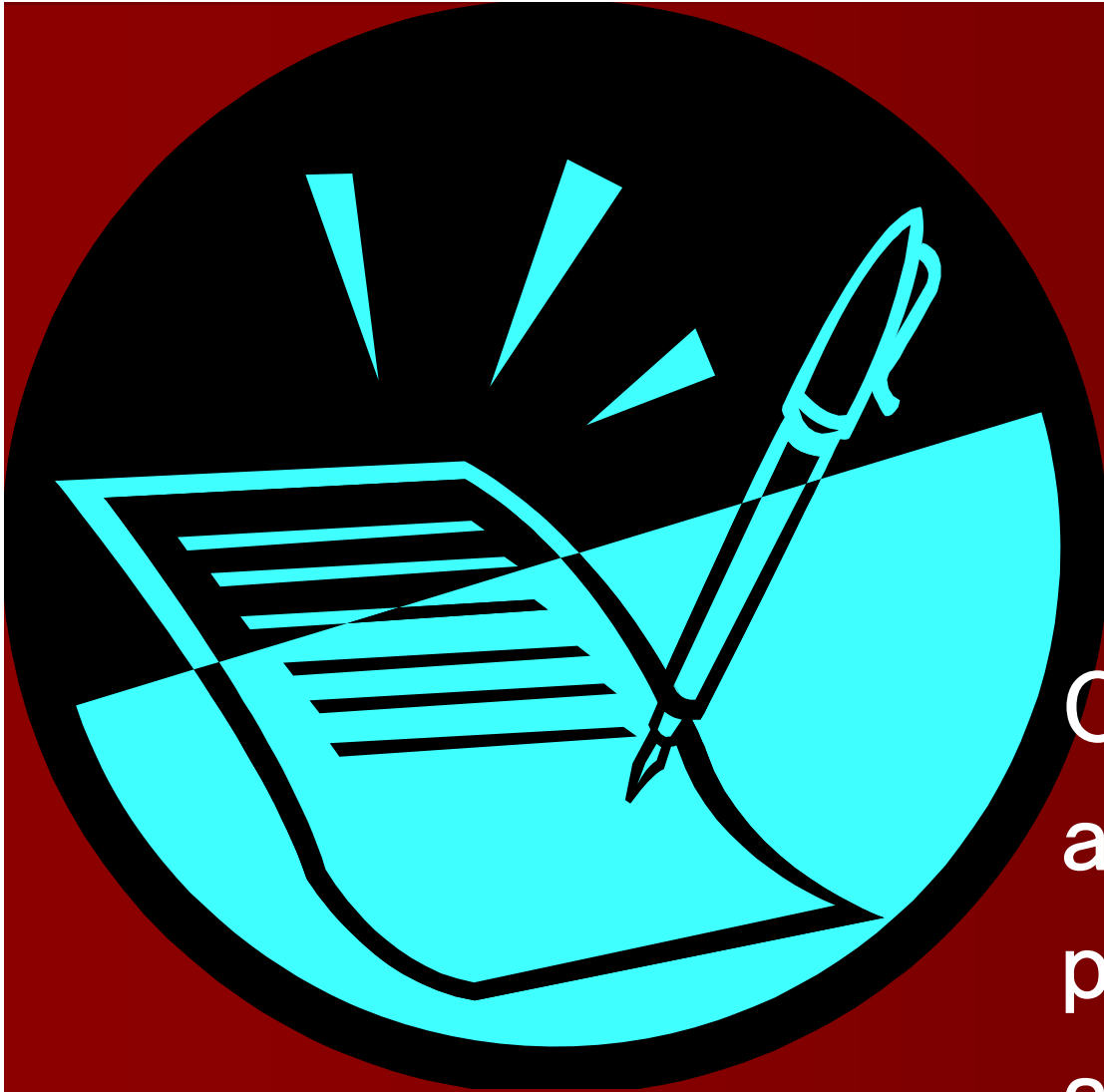
This includes:

- recent MEE questions
- previously administered MEE questions and model analyses
- the six MEE questions administered in July 2019 MEE without the analyses


MEE TIPS

Answer the
call of the
question . . .





Organize your
answer, use
proper grammar
and appropriate
tone

A stylized illustration featuring a hand holding a megaphone. The hand is dark brown with a black outline, and the megaphone is black with a light blue band. The background consists of a central yellow area with green geometric shapes, flanked by dark red vertical bars. A speech bubble is integrated into the hand, containing the text:

Don't discuss
what you're
told *not* to
discuss . . .

**Don't waste time
giving irrelevant
background . . .**



Use correct legal terminology . . .

(not legalese or jargon)

SELLER'S PROPERTY DISCLOSURE STATEMENT (Page 1)
(NOT A WARRANTY)

THE SELLER

following form. Do not leave any spaces blank unless the question clearly does not require an answer. Do not leave any spaces blank unless the question clearly does not require an answer. Do not leave any spaces blank unless the question clearly does not require an answer. Do not leave any spaces blank unless the question clearly does not require an answer.



Don't make
assumptions
about the
facts . . .

Use the facts that
are provided.

Don't buy into
gimmicks . . .



Don't panic!







BE

Multistate Bar Exam

MBE – 200 Multiple Choice Items

- Civil Procedure
- Constitutional law
- Contracts
- Criminal law and procedure
- Evidence
- Real property
- Torts



Multistate Performance Test

MPT – Two 90-Minute Items

Examples:

- Opinion letter to client
- Persuasive brief
- Proposal for settlement agreement
- Contract provision
- Objective memorandum
- Letter to opposing counsel

An MPT item consists of:

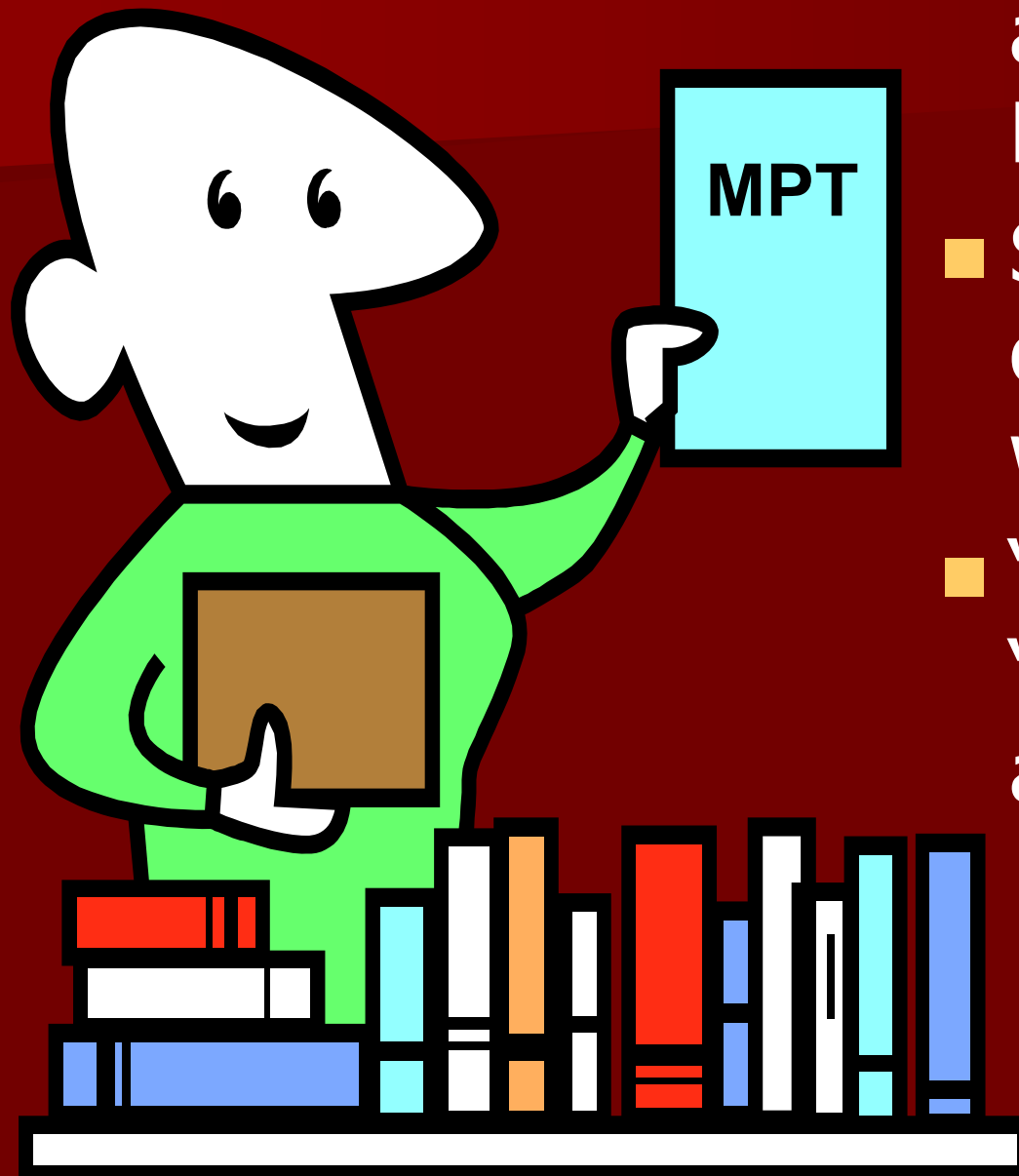
- “File”
 - Memo giving you a task
 - Factual information
 - Guidelines for performing the task
- “Library”
 - Legal authorities needed to perform task

What the MPT Tests

- Problem solving
- Legal analysis & reasoning
- Factual analysis
- Communication
- Organization & management of legal tasks
- Recognition & resolution of ethical dilemmas

What the MPT Does Not Test

- The MPT is not designed to test substantive legal knowledge
- Legal authorities needed to perform the task are provided in the “library”
- MPT items can therefore cover any substantive area of the law



- Old MPT items are available from the NCBE
- Some are published on the NCBE website
- “Point sheets” or “model answers” are also available

MPT Tips

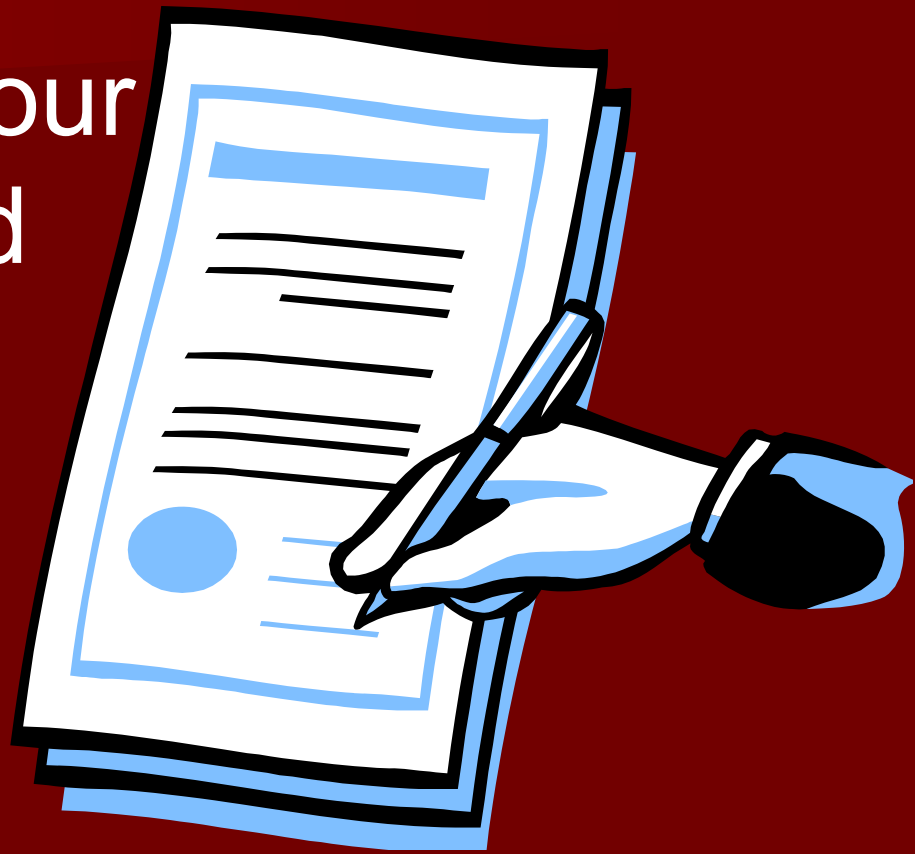
Pay attention
to the exact
task that's
been
assigned . . .



**Take advantage of
the office memo that
provides guidelines
for the task . . .**



Organize your
answer and
prepare an
outline . . .





Review old
MPTs and
their “point
sheets”
before the
exam . . .

Write clearly



Grading

MBE

- Computer graded by NCBE
- Raw score is number correct out of 200 items
- Raw score is then “equated” to adjust for differences in exam versions
- Equated score is called the scaled score

MEE Questions

- Graded by Bar Examiners and readers
- Maximum score per essay is 6
- Maximum score for all essays is 36
($6 \times 6 = 36$)
- This is a raw score

MPT Items

- Graded by bar examiners and readers
- Maximum score per MPT is 6
- Maximum score for both MPTs is 12
(6 X 2 = 12)
- This is a raw score

MEE and MPT scoring

- The MEE and MPT scores are scaled to the MBE to produce bar exam scores that are comparable across administrations/time.
- For example, scores earned on the July 2019 exam indicate same levels of proficiency as scores earned in earlier administrations.

Total UBE Score

Scaled Written score counts as 50%

Scaled MBE score counts as 50%

$\text{WRITTEN} + \text{MBE} = \text{Total UBE Score}$

270 Points to Pass

How much does each exam component count?

- MBE = 50%
- MEE = 30%
- MPT = 20%



**I just want to be
a lawyer, not a
psychometrician**

Post-exam Matters

Ohio Law Component

- The Ohio Component will consist of outlines and an online, open-book, multiple choice exam covering relevant Ohio-specific components.
- The Board of Bar Examiners will prepare and maintain the outlines and will develop the questions.

Ohio Law Component

- The Ohio Component is a pre-admission requirement.
- Applicants will be granted access to the exam the day after the bar examination.
- This exam must be completed prior to admission in order to be eligible to attend the ceremony.
- Applicants must receive a score of 80% or higher.

- Exam results are released in late October or early November
- A detailed score report is mailed to each examinee





Don't forget to
have your
passing MPRE
score (85+)
certified to the
Court!

An admission ceremony is held in November for eligible applicants



Questions?



Call the Bar Admissions
Office:

- 614.387.9340
- 614.387.9350
- Baradmissions@sc.ohio.gov

Slide 63

KT1

Kline, Tiffany, 4/16/2020

A black silhouette of a person with their arms raised in a celebratory gesture, set against a white background. This central image is framed by a dark red border.

You CAN pass!